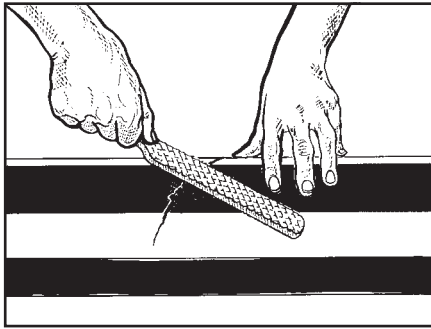




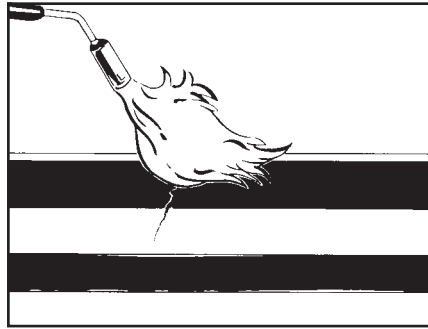
**Materials and equipment**

1. PERP MELTSTICK
2. Wire brush, knife
3. Propane tank regulator, torch
4. Standard safety equipment as prescribed by local regulations

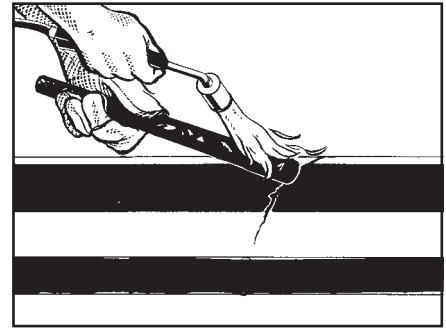
Installation has to be done according to local government regulations and usual safety precautions.



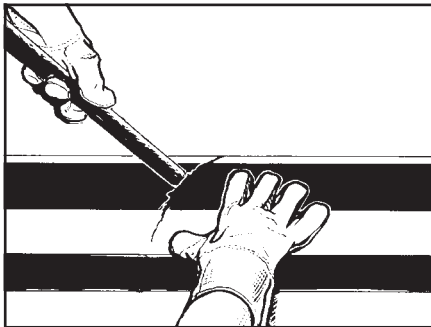
1. Remove loose coating from the damaged area with a knife, scraper or wire brush. Eliminate all sharp edges and clean the damaged area and adjacent coating to remove all foreign material such as dirt, rust, oil, grease and moisture.



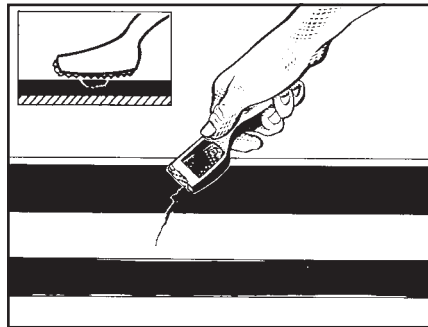
2. Preheat the pipe coating up to 60°C.



3. Heat the end of the PERP Melt Stick until it becomes glossy.



4. Spread the molten adhesive onto the damaged area.



5. When the PE is hard, smooth the molten adhesive flush with the PE line coating by use of a point scraper.