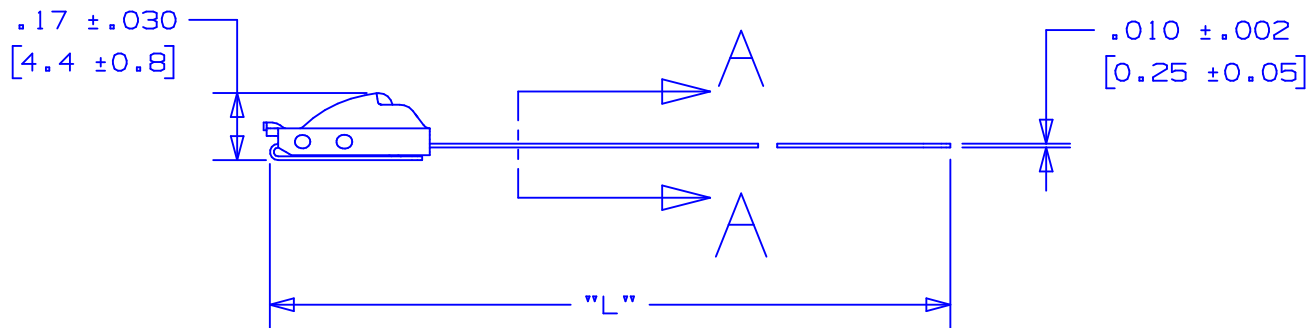
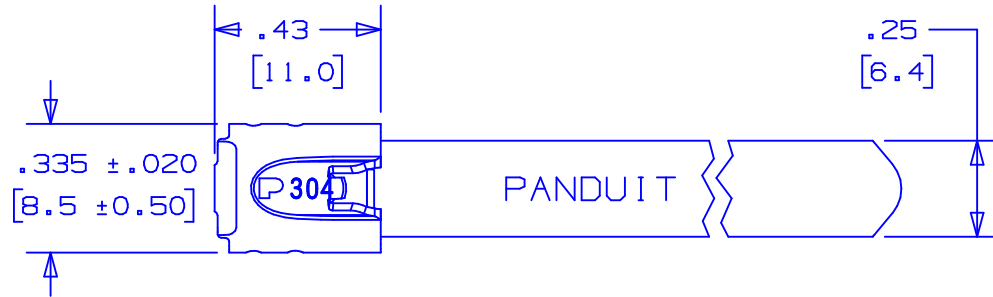
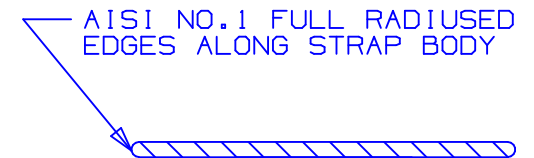


PANDUIT PART NO.	MAX BUNDLE DIA.	PACKAGE QTY	LENGTH L ±.3 [7]
MLT2LH-LP	2" [51]	50	7.9" [201]
MLT4LH-LP	4" [102]	50	14.3" [362]
MLT6LH-LP	6" [152]	50	20.5" [521]
MLT8LH-LP	8" [203]	50	26.8" [679]



NOTES:

- 1.) APPLICATION TOOLS - GS4MT, PPTMT, ST2MT, ST3MT, AND HTMT
- 2.) MINIMUM LOOP TENSILE STRENGTH - 250 LBS. (1112 NEWTONS) WHEN TESTED ON A 1 1/2" MANDREL.
- 3.) [] DENOTES DIMENSION IN MILLIMETERS
- 4.) TOLERANCES:
 - .XXX = ±.010 [.25]
 - .XX = ±.02 [.5]
 - .X = ±.03 [.8]
 - ANGLES = ±2°



SECTION A - A
SCALE: 8x

S41126_01

PANDUIT CORP.

TINLEY PARK, ILLINOIS

METAL LOCKING TIE
LIGHT/HEAVY SERIES - 304 STAINLESS STEEL

REV	DATE	BY	CHK	DESCRIPTION	ECN #	PM	CUST
01	10/03	BRH	DPN	Ⓐ ADDED ST3MT TO APPLICATION TOOLS NOTE	11162	CCH	JJB
00	6/03	JAMB	DPN	RELEASED	10544	CCH	JJB

DRAWN BY	CHK'D	SCALE	DRAWING NO.
JAMB	DPN	2x	S41126