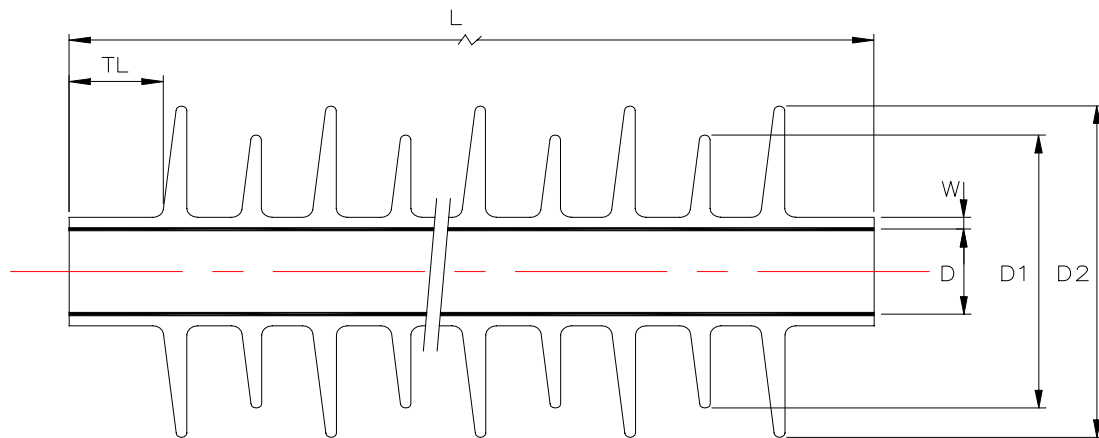


Typical Application A.C. overhead systems up to 400 kV



Product Description	No. of sheds	D		D1	D2	W	TL	L	Creepage	Application	
		a min	b max	b nom	b nom	b nom	b nom	b nom	b nom	min	max
200S-071B-103/196	7	20	13	71	101	4	33	206	610	16	18
200S-071B-M01-103/196	7	27	13	71	101	4	33	206	610	16	22
200S-152B-104/196	15	25	19	81	101	4	34	468	1300	20	23
200S-072B-103/196	7	33	19	75	105	3	34	244	660	20	29
200S-093C-104/196	9	40	29	85	105	4	62*	319	770	30	38
200S-093C-M01-104/196	9	40	29/50	85	105	4	62*	319	770	30	38
200S-074B-104/196	7	58	38	120	140	4	33	289	820	40	56
200S-054C-M01-103/196	5	53	41	89	109	4	97,5 *	261	490	43	50
200S-054C-M01-104/196	5	53	41	89	109	4	97,5 *	261	490	43	50
200S-104C-M01-103/196	10	53	41	89	109	4	118,5	480	920	43	50
200S-104C-M01-104/196	10	53	41	89	109	4	118,5	480	920	43	50
200S-054B-M01-103/196	5	53	43	115	135	4	65	225	550	43	51
200S-054B-M01-104/196	5	53	43	115	135	4	65	225	550	43	51
200S-114B-M01-103/196	11	53	43	118	138	4	65*	450	1230	43	51
200S-114B-M01-104/196	11	53	43	118	138	4	65*	450	1230	43	51
200S-134B-M02-104/196	13	58	43	115	135	4	65	440	1310	43	51
200S-164C-M02-103/196	16	53	41	89	109	4	115	675	1350	43	51
200S-164C-M01-104/196	16	53	43	89	109	4	100	645	1270	45	51
200S-227N-103/196	22	95	72	141	161	4	42/64	670	2020	75	90
200S-227N-104/196	22	95	72	141	161	4	42/64	670	2020	75	90
200S-067N-103/196	6	95	72	141	161	4	7	156	520	75	93
200S-117N-103/196	11	95	72	141	161	4	43*	330	1010	75	93
200S-127N-103/196	12	95	72	141	161	4	44	386	1120	75	93
200S-127N-M02-103/196	12	95	72	141	161	4	12	327	1060	75	93
200S-1210B-103/196	12	120	98	156	176	4	57	410	1030	102	118
200S-1210B-M01-103/196	12	120	98	156	176	4	57	410	1030	102	118

Notes:

1. All dimensions in mm: a = as supplied; b = after full recovery
  2. Mastix coating thickness: all sizes = 0.4 mm nominal
- \* not symmetrical